

RIPON COLLEGE PIEPER REPORT



JANUARY 2016

DAVID W. SCOTT

SERVANT LEADERSHIP AT RIPON COLLEGE

Foci for work:

- **Collaborative on-campus programming for students**
- **Assistance with programming and service-learning for faculty and staff.**
- **Minor in Socially Responsible Leadership**
- **Problem-solving, skills-focused curriculum**

Rationale:

- **Fits student profile, geographic location, financial profile, and culture of the college.**

OUTCOMES
DATA

RIPON COLLEGE GRADUATE QUESTIONNAIRE

What leadership skills, if any, did you learn at Ripon College (through classes, athletics, Greek life, a student organization, or other opportunity) that you feel will be most useful after you graduate? Circle all that apply:

Servant leadership trait	2013	2014	2015
Empowering and developing people	53%	59%	56%
Humility	54%	54%	56%
Authenticity	53%	50%	52%
Accepting others	65%	68%	58%
Responsibility for people, organizations, and resources	74%	68%	70%
Providing direction to others/groups	63%	64%	66%

RIPON COLLEGE GRADUATE QUESTIONNAIRE

Two-sport athletes

- One of the lowest groups in 2013
- One of the lowest groups in 2014
- The highest group in 2015

Shows success of Leadership in Athletics
and Life conference held spring 2014

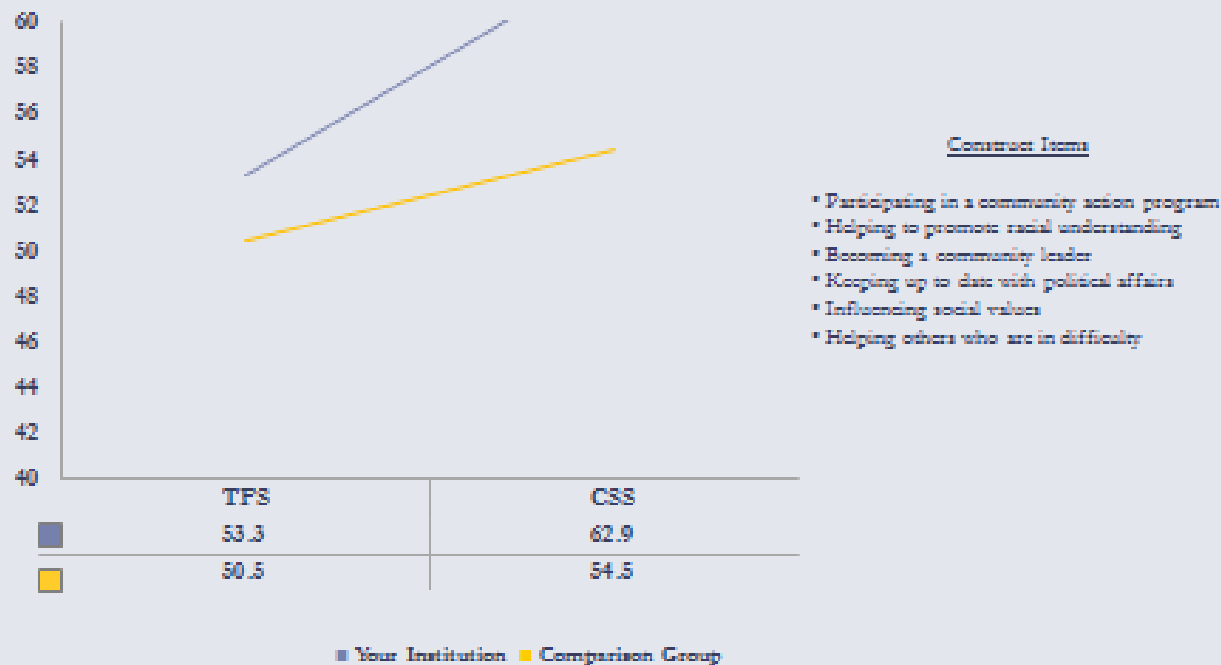


COLLEGE SENIOR SURVEY (CSS)



Social Agency

Activities and beliefs equip and empower students to create a world that is equitable, just, democratic, and sustainable. *Social Agency* measures the extent to which students value political and social involvement as a personal goal.

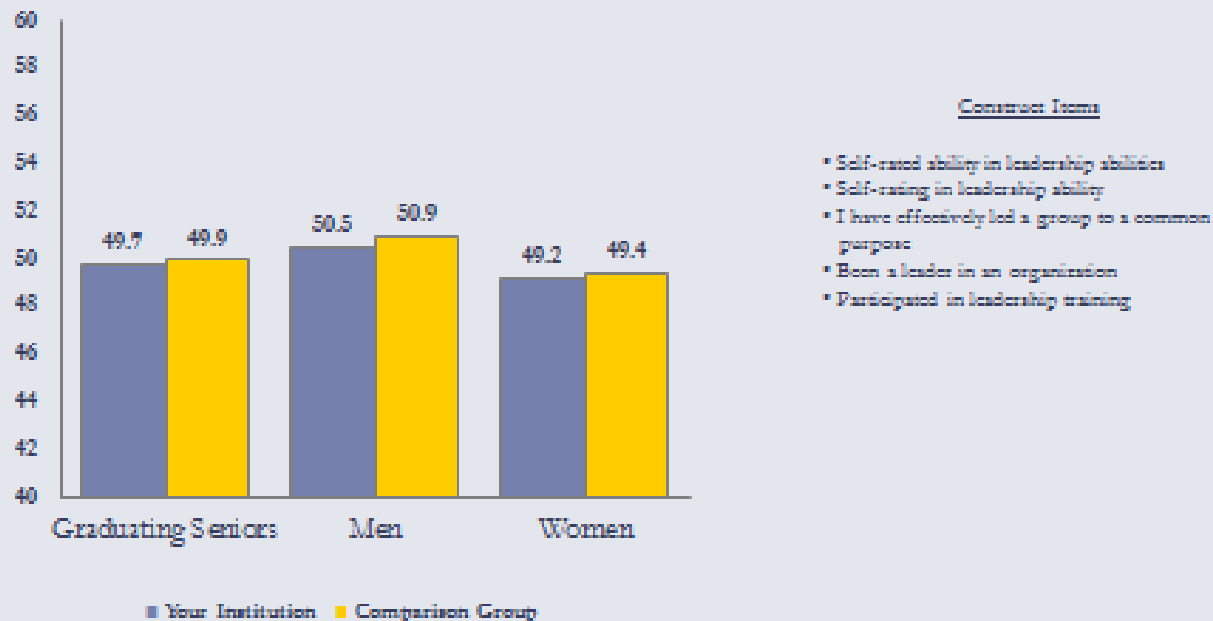


COLLEGE SENIOR SURVEY (CSS)



Leadership

Leadership measures students' beliefs about their leadership development and capability, and their experiences as a leader.

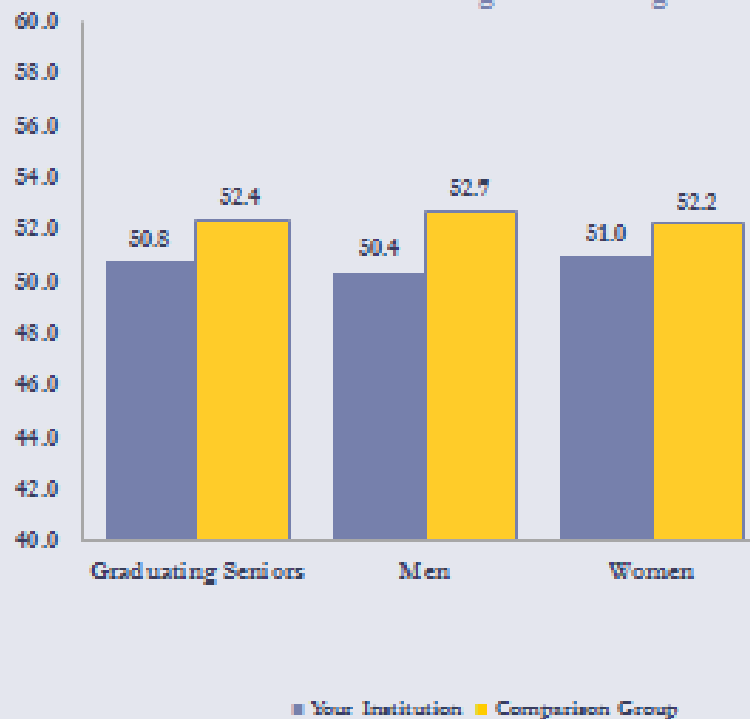


COLLEGE SENIOR SURVEY (CSS)



Pluralistic Orientation

Pluralistic Orientation is a unified measure of skills and dispositions appropriate for living and working in a diverse society.



Construct Items

- Tolerance of others with different beliefs
- Ability to work cooperatively with diverse people
- Openness to having my own views challenged
- Ability to see the world from someone else's perspective
- Ability to discuss and negotiate controversial issues

RC HAWK WELLBEING SURVEY

- **Measures knowledge and behaviors**
- **Administered as first-years and as seniors**
- **Assess impact of college services and programming**
- **Six dimensions of wellbeing:**
 - **Community**
 - **Purpose**
 - **Mental**
 - **Physical**
 - **Financial**
 - **Social**

**BREAK-
THROUGH
VENTURES**

RIPON COLLEGE CURRICULUM REVIEW

Five course core:

- **Core 110: Writing seminar**
- **Core 120: Quantitative reasoning seminar**
- **Core 210: Intercultural competence seminar**
- **Core 220: Interdisciplinary inquiry seminar**
- **Core 300: Collaborative problem-solving seminar**

Focus on skill-development over core sequence

Connect to real-world problem solving

RIPON COLLEGE CURRICULUM REVIEW

CORE 110:
Writing

CORE 120:
Quantitative
Literacy

CORE 210:
Intercultural
Competence

CORE 220:
Interdisciplinary
Inquiry

Collaboration

Inform-
ation
literacy

Oral
commun-
ication

Critical
analysis

Writing

Writing

Critical
analysis

Inform-
ation
literacy

Oral
commun-
ication

Creative
Thinking

COLLABORATIVE WORKING GROUPS

- Diversity Leadership Roundtable
- Environmental Leadership Roundtable
- Ripon College Health and Wellness Koalition (RC HAWK)
 - Trustee Vikki Bleise
 - Student Life Division
- #AskBigQuestions
 - Lane Library



FINANCIAL LITERACY INTERN

“The Economic Justice through Financial Literacy Internship with the Center for Social Responsibility is responsible for developing and implementing programming across campus focusing on teaching basic personal finance with the ultimate goal of breaking bad financial habits and giving students the tools to become economically stable and independent for their whole lives.”

MINOR IN SOCIALLY RESPONSIBLE LEADERSHIP

Introduction to Ethical and Servant Leadership



Ethics Elective



Leadership/Management Elective



Two Emphases (2 Classes Each)

Community Engagement and
Service Learning

Social Entrepreneurship and
Innovation

WORK OF THE CHAIR

SERVANT LEADERSHIP PRESENTATIONS

On servant leadership:

- **Mary Avery's Business Management 309: Social Entrepreneurship**
- **Lindsay Blumer's Business Management 309: Social Entrepreneurship**
- **Mary Avery's Business Management 315: Strategic Management**

On hunger and food insecurity:

- **Mollie Oblinger's Art 180: Ceramics I**

Discussion with Athletics Department about future leadership training programs

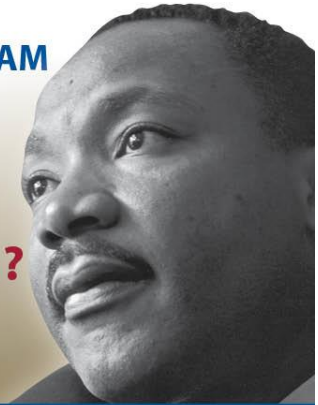
AREA OF FOCUS: DIVERSITY

- Diversity Leadership Roundtable
- MLK Week Events
- Racial and Cultural Diversity Intern
- LGBTQ Diversity Intern

CONTINUING THE DREAM

celebrating the life and legacy
of martin luther king jr.

Race and the (in)Justice System?



KEYNOTE ADDRESS

Sunday, January 25
Joseph Frey

Bear Auditorium, Farr Hall
6pm

Joseph Frey was wrongfully convicted of rape and spent 8 years in prison before being exonerated. Come listen to him tell his story of how he felt (in)justice in his case & how justice eventually prevailed.



Monday, January 26
Committing to the Dream

Come write your written commitment to the dream during lunch and dinner in the commons. You can also read some alarming Wisconsin statistics about race and the criminal justice system

Pickard Commons, during lunch and dinner

Tuesday, January 27
Broken on All Sides Documentary and Discussion

The documentary focuses on mass incarceration across the nation and the intersection of race and poverty within criminal justice. Discussion will be lead by Associate Professor of Global Studies Mike Mahoney. Grab your dinner and join us!

Heritage room, Pickard Commons, 5:30pm

Wednesday, January 28
The Justice League: Alumni panel

Supreme Court Justices, public defenders, and law enforcement officials will sit on a panel discussing race and the criminal justice system and the best part is, they are all Ripon alumni. Grab your dinner and join us for the event and conversation

Heritage room, Pickard Commons, 5:15pm

Thursday, January 29
MLK Annual Awards Breakfast

Three deserving individuals will be awarded and recognized for their service to Ripon. We will also have entertainment and a great meal.

Great Hall, Harwood Union, 8:30am, RSVP required through the portal until Jan 23

Friday, January 30
Presentation of racial disparities in the criminal justice system

High school instructor Kat Griffith has done extensive research on the criminal justice system and its racial disparities. Join us as she enlightens Ripon on the WI system and others

Todd Wehr 204, 2:30pm

Saturday, January 31
MLK Giving Back Community Service

St Charles Youth and Family Services, Milwaukee WI, bus leaves at 10am from Commons lot, lunch provided

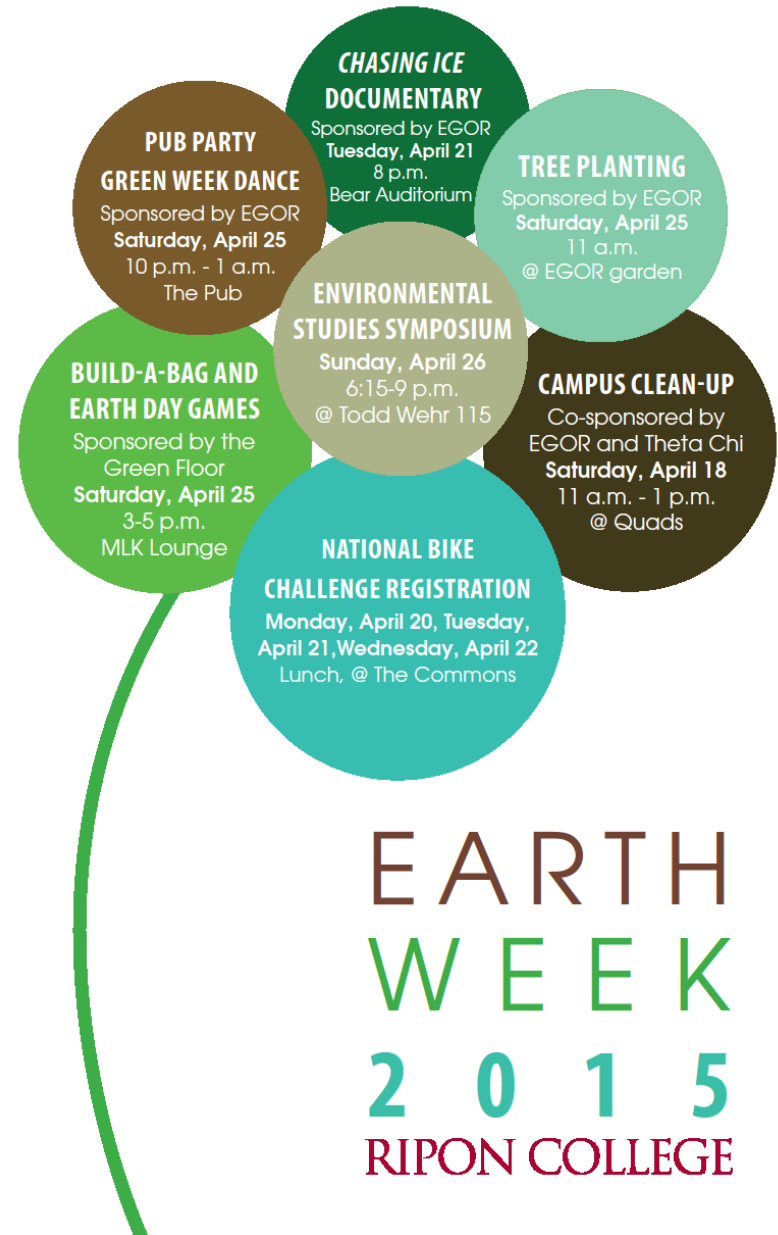
St. Charles is a non-profit human services agency and provides an array of prevention and intervention services for Wisconsin youth, adults, and families. Ripon will work with youth to get them excited for their future and on the right path. Sign up by email writersk@ripon.edu

Planning committee: David William Scott, John Hughes, Meg Cane, Chester Ismay, Amanda Przybyl, Mike Mahoney, Emily Margaretten, Chris Ogile, Kate Moody, Fabiola Mercado, and Kynona Withers



AREA OF FOCUS: ENVIRONMENT

- **Environmental Leadership Roundtable**
- **CSR Sustainability Intern**
- **Earth Week Events**
- **STARS Assessment**



AREA OF FOCUS: HUNGER

- **Empty Bowls**
- **Sociology Club Hunger Month**
- **Sociology Club Hunger Panel**
- **Collaborative All-Campus Food Drive**
 - Sociology Club
 - Student Athletic Leadership Team
 - Center for Social Responsibility
 - Sodexo Dining Services



SERVICE AND SERVICE-LEARNING

Completed:

- **Josh Filler's Philosophy 200.02: Philosophy of Food**
- **RC2 5K/10K/Half-Marathon**
- **Spring Cleaning Recycling Drive**
- **STRIVE service at Boerson Farm**
- **Health, Wellness, and Community Fair**
- **Martin Luther King, Jr. Day of Service**

In planning:

- **310/312 Watson St. lot rehabilitation**
- **Ripon Area School District internships**
- **Ripon High School juniors college and service promotion**

EDUCATIONAL & OTHER CAMPUS PROJECTS

- **TED Talks & Tea**
- **Hawk Talks**
- **Cultural Diversity Club's Syria Week**
- **Center for the People and Politics programming**
- **Will & Company Hispanic Heritage Month performance**
- **Ethics Bowl preparation**
- **Science senior seminar ethics case analysis**
- **Student collaboration with UW-Extension**
- **Miss Ripon Charity pageant**
- **WRPN advisor**

COLLABORATION WITH OFFICE OF ADMISSIONS

Pickard Scholarship essay questions:

- You have been granted a thirty minute interview with President Obama. You represent all 17-20 year olds in the country. What topics do you want to talk about? What questions would you ask the President? What answers would you hope to receive?**
- You've been awarded five million dollars that must be used in the form of charitable donation or the development of a new organization to better the world. Where do you donate the money and why or what organization do you start and why?**
- Ripon College's mission is, in part, to "...prepare students of diverse interest for lives of productive, socially responsible citizenship..." What does it mean to be a socially responsible citizen? How can you use those traits to better your life and your community?**

**OUTSTANDING
SERVANT
LEADERS**

STUDENT: KAITLYN WELZEN

Leadership positions:

- **Sodexo Sustainability Intern**
- **President of Environmental Group of Ripon (EGOR)**

Recognitions:

- **National Sodexo Sustainability Best Practices**
- **RC Dean's Award**

Projects:

- **Campus composting**
- **Reusable mugs**
- **Hoop house**
- **Tower gardens**



New sustainability position at Sodexo after graduating

FACULTY MEMBER: MARY AVERY



Business teaching:

- **Nonprofit management, entrepreneurship, social entrepreneurship**

Student projects:

- **ENACTUS, Creative Enterprise Consultants (CEC), Marquette University Good Money Challenge, Imagination Network, Ignite**

Community involvement:

- **Ripon Noon Kiwanis, Diverse Options, Ripon Area Chamber of Commerce, Ripon Community Development Corporation, Blue Mountain Project, Thrasher Opera House, League of Women Voters, Wisconsin Small Business Development Centers**

Support of servant leadership:

- **Center for Social Responsibility, Minor in Socially Responsible Leadership, servant leadership speech at Awards Convocation**

Tom Avery as “partner in life and in crime”

THANK YOU!

David W. Scott
Pieper Family Chair of Servant Leadership

Ripon College
300 Seward St.
Ripon, WI 54971
920-748-8318
scottdw@ripon.edu

